

## 1014 Bronze Horizontal Check Valve No.9 (Flanged)

### Salient Features

- Flanged Ends to BS 10 Table 'F'.
- Screwed on Bonnet.
- Permits flow in one direction and closes automatically if the flow reverses.
- Renewable 13% Cr. Stainless Steel (S.S 410) working parts.
- Metal Disc is mushroom shaped with spherical seating surface.
- Meant for Horizontal Lines Only.
- Disc is guided in Bonnet.

Test Pressure (Hydrostatic) :  
Shell : 35 kg/cm<sup>2</sup>g (500 psig)  
Working Pressure (Steam) : 10.55 kg/cm<sup>2</sup>g (150 psig)  
Maximum Working Temperature : 225°C

### Suitable For

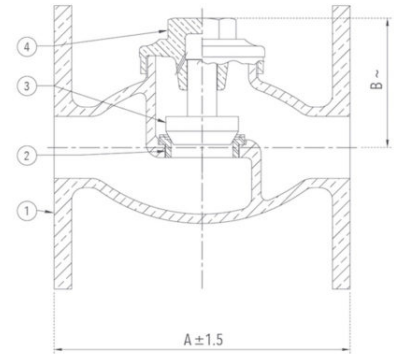
Steam, Water, Oil, Air\*, Gases\*

\*Also available with PTFE Seating for Air and Gas applications, at a nominal extra price.



### Materials

| P.No. | Name of Part   | Material of Construction | Specification      | Quantity |
|-------|----------------|--------------------------|--------------------|----------|
| 1     | Body           | Bronze                   | IS 318 Gr. LTB 2   | 1        |
| 2     | Body Seat Ring | Stainless Steel          | ASTM A276 Type 410 | 1        |
| 3     | Disc           | Stainless Steel          | ASTM A276 Type 410 | 1        |
| 4     | Bonnet         | Bronze                   | IS 318 Gr. LTB 2   | 1        |



### Sizes / Dimensions

| Size (Inches) | Size (mm) | A ±1.5 | B ~ |
|---------------|-----------|--------|-----|
| 1/2           | 15        | 82     | 48  |
| 3/4           | 20        | 96     | 50  |
| 1             | 25        | 112    | 61  |
| 1 1/4         | 32        | 119    | 72  |
| 1 1/2         | 40        | 132    | 84  |
| 2             | 50        | 157    | 93  |
| 2 1/2         | 65        | 185    | 109 |
| 3             | 80        | 213    | 121 |
| 4             | 100       | 248    | 146 |

~ ±10